

# MedIRA

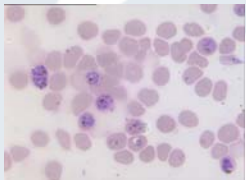
- Medical Imaging Team  
From I2R

Dr. Jimmy Liu  
[jliu@i2r.a-star.edu.sg](mailto:jliu@i2r.a-star.edu.sg)

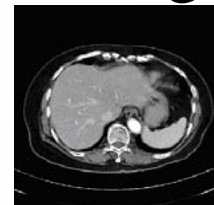
# Projects we do



- Cataract grading using lens image
- Stroke detection using brain CT image
- Liver segmentation using abdominal CT image
- Head injury diagnosis using brain CT image
- Malaria detection using microscopic image
- Breast cancer detection using microscopic biopsy
- Glaucoma diagnosis via analysis of morphological features of the optic disc
- Intelligent Glaucoma automatic diagnosis



Co-Confidential



# Partners we seek

- We like to work with consortium leader and other technology providers
- We would like to contribute our medical image processing and diagnosis expertise to the team

Co-Confidential