

BIGontheNet offers enabling technology and solutions for the implementation of scalable, aggregated and integrated e-business services through our proprietary technology, iCubed.

iCubed™ provides the vital link between distributed, disparate websites, applications and Web Services, allowing flexibility and interoperability with multi-lingual information extraction and cross-lingual aggregated searches.

Supporting industry standards like XML, WSDL, SOAP and UDDI, iCubed™ enables you to leverage existing legacy systems, Intranets and external resources, like systems and content belonging to your partners and vendors. You save time and money and enhance the productivity, efficiency and effectiveness of your enterprise and people. iCubed™'s adaptive and robust, plug-in architecture enables easy deployment, maintenance and scalability.

iCubed™ powers SurfIP (<http://www.SurfIP.gov.sg>) for one singular point of access to a global reservoir of digitized Intellectual Property information.

Core Expertise/Key Strength

iCubed™

Inside iCubed™

iCubed™'s scalable, robust, and plug-in architecture enables easy deployment and maintenance of Web Services and integrated applications. It comprises 4 main components:

Server Engine

iCubed™ aggregates the sources into a single-point-of-access, harmonises across the different sources, and performs the integration needed for the workflow. The server engine also provides value-added services to the aggregated information. Collected data can be further transformed via iCubed™ services such as language translation and XML translation.

Library of Multi-source Adapters

Each iCubed™ solution can provide interoperability for any number of information sources, applications, databases and Web Services. See back of brochure for technical specifications and compatibilities.

Info-Management Modules

Depending on the business rules, users can view, organize and manage consolidated results to queries.

Reporter Modules

iCubed™ offers the ability to capture desired user behavior data. Comprehensive user reports for ground-up tracking and monitoring can be generated, to enhance customer relationship management.

iCubed™ Features

Single User Sign-on - allows user to log on to multiple sites that require authentication using one-stop, sign-on feature.

Workflow - able to automate and control flow of info between processes including multiple processes and hierarchy of processes.

Tunnelling - able to forward parameters into different levels and allow users to send information to different parts of their applications.

Access Control - able to process access control to users.

Multi-lingual - enables extraction of multilingual information and cross-language searches from web-based sources. Its architecture supports double-byte character systems

XML Support - supports industry programming standards and protocols such as XML, WSDL, SOAP and UDDI.

Track/Transform and Report - able to collect data, filter, integrate, tabulate results and deliver valuable CRM data such as traffic and user behavior reports.

iCubed™ Capabilities

Scalability - the iCubed™ engine has a multi-threaded and distributed application architecture and runs on the Java platform ensuring superior stability and scalability.

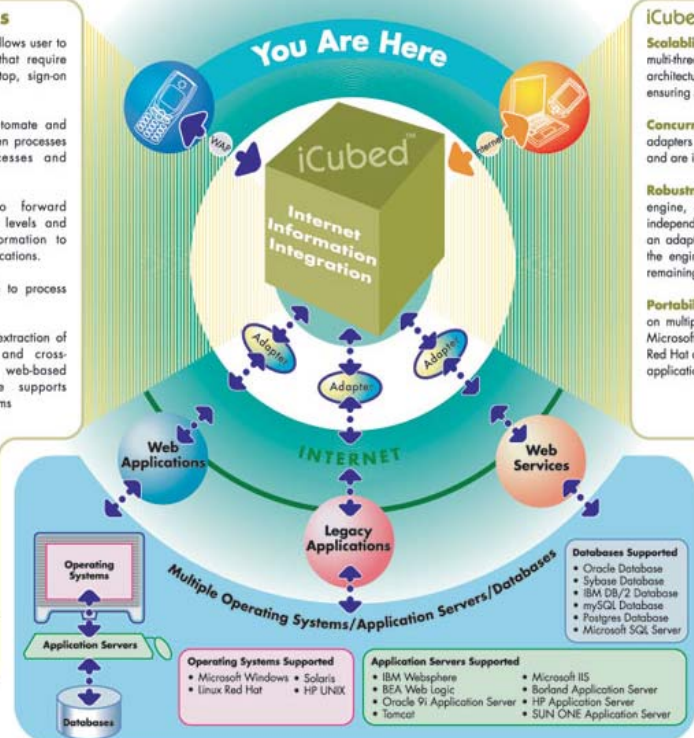
Concurrency - The entire library of adapters can be activated simultaneously and are independent of each other.

Robustness - Forming the core of the engine, adapters are built to operate independently. In the unlikely event that an adapter fails, overall performance of the engine is not compromised and all remaining adapters continue to function.

Portability - iCubed™ solutions can run on multiple platforms such as HP UNIX, Microsoft Windows, Solaris and Linux Red Hat and are accessible through many applications.

Personalization - iCubed™ uses technologies that can easily be configured to link with other web applications to provide front-end interfaces that can readily synergize with the existing portal.

Secured Channels - iCubed™ server engines work on HTTP's secured channels.



- Operating Systems Supported**
- Microsoft Windows
 - Solaris
 - Linux Red Hat
 - HP UNIX

- Application Servers Supported**
- IBM Websphere
 - BEA Web Logic
 - Oracle 9i Application Server
 - Tomcat

- Microsoft IIS**
- Borland Application Server
 - HP Application Server
 - SUN ONE Application Server

- Databases Supported**
- Oracle Database
 - Sybase Database
 - IBM DB/2 Database
 - MySQL Database
 - Postgres Database
 - Microsoft SQL Server

Potential complementary companies sought

End users, Solution & Technology Providers who need to:

- **Leverage existing legacy systems, intranets and external resources and contents**
- **Harmonise without extensive backend development**
- **Targeted search topics with single point of access in an un-intrusive manner**
- **Creating comprehensive information products and services**
- **Aggregated Searches with multi-lingual support**